

Issue 3 2009

# Kirkman

HOUSE MUSEUM News

## Sheep to Shawl



Shawl for drawing

The Kirkman House Museum is pleased to once again host our annual Sheep to Shawl Fall Festival.

The Kirkman House Museum's 9th annual Sheep to Shawl Fall Festival promises hours of fun, free activities and demonstrations to celebrate our community's rural heritage. The event will take place on October 3rd, from 11 am to 3 pm on the museum grounds.

Demonstrations include traditional candle dipping, spinning and weaving, and of course sheep shearing on the side lawn.

A lamb lunch from Graze Catering and a variety of desserts will be available between noon and 2:30 pm.

As in past years one lucky drawing winner will take home a beautiful hand woven shawl created by our very own textile artist Susan Swayne. Susan spun and dyed the wool shorn from the sheep at last year's festival to create a one of a kind piece valued at over \$200. Tickets are available for a suggested donation of \$1.00 per ticket or 6 tickets. The drawing and food sales help fund the museum's programs.

The museum and exhibits will also be open to the public throughout the event.



## The Downtown Haunted House Returns!

The Kirkman House is partnering with ArtWalla this year to present the second annual Haunted House at the historic O'Donnell Building at 16 1/2 W. Main Street.



"Scary movies" is the theme this year with rooms that contain vignettes from some of your favorite thrillers. Just like last year, the hair-raising scenes will be to one side and a family-friendly version will be to the other.

"It makes sense for the museum and ArtWalla to work together to achieve the goals of each organization," says Kirkman House board member Rick Tuttle. "Each group is committed in its own way to preserving our local heritage."

ArtWalla is a nonprofit art agency established in 1992 to promote and celebrate access to art for all. Their largest public art project to date, Windows on the Past, began with saving the historic 1902 Odd Fellow Temple façade and relocating it to Heritage Park on Main Street. Reproductions of historic and contemporary photographs of founding communities are installed in the windows as a glimpse into Walla Walla's heritage.

The Haunted House will be open Wednesday through Friday, October 28 through 31 from 6 pm to 9 pm. Admission is \$5.00. Funds from the event support ArtWalla and Kirkman House Museum community programming.



**2009 Board of Directors**

Sally Kearsley, Board President  
 Linda Kastning, Past President  
 Donna Gardner, Vice-President  
 Susan Roberts, Treasurer  
 Pam Myers, Secretary  
 Wendy Cheng  
 Cheryl Cockerline  
 Sue Gillespie  
 Carolyn Priest  
 Jennifer Rickard  
 Rick Tuttle

**Executive Director**

Kirsten R. Schober

**Assistant Director**

Greer G. Buchanan

**Textile Center Volunteers**

Mary Jane Fehrenbacher  
 Peggy Hoyt  
 Tam Lennox  
 Sharon Newbrey  
 Susan Swayne

**Museum Volunteers**

Bev Filla  
 Carl Killelea

*Special thanks to...*

our **Hands on History** volunteers including **Mikaelyn Swayne, Kristen Wilson, Tam Lennox, Jessica Kilgore, Bev Filla and Susan Swayne** for generously giving their time to our enrich the lives of our community youth.

the **Crafty Cooks**, for their immense assistance in caring for our kitchen garden.

**Blue Mountain Sheep**

Producers for their financial support of the 9th annual Sheep to Shawl.

**1-2-3 Printing** for making our color newsletters possible.

**Yancey P. Winans Community Grant** for supporting our Hands on History summer camps.

**KIRKMAN NEWS BRIEFS****Recent Grant awarded to museum**

The Kirkman House Museum recently received a \$2,000 grant from the George T. Welch Testamentary Trust to help fund repairs to the front porch.

The porch was altered

significantly after the Kirkman family left the home, before the house became a museum. The alterations included removal of support beams. Installing new support beams will stabilize the porch as the museum prepares to restore the porch to its original appearance with a balcony.

**Traveling Exhibit: Catherine Blain Paine**

In January the museum will kick off the 2010 Washington Women's Suffrage Centennial with Catherine Blaine Paine: Seneca Falls & the women's rights movement in the state of Washington. The exhibit will explore how the reform ideas of new settlers impacted the development of the women's rights movement in our state. The exhibit, a joint project of the Women's Rights National Historical Park in Seneca Falls, N.Y. and the Washington State Historical Society, will run January 15 through April 8, 2010.



## What a fun summer we have had!



Local girls from the 4H group the Crafty Cooks planted the garden, and harvested tomatoes, carrots, squash and much much more. The food was donated to Helpline's food bank. The garden also produced three huge pumpkins, one of which was awarded a second place ribbon at the Walla Walla Fair and Frontier Days.



And on August 20th, the Kirkman House partnered with the City of Walla Walla and Walla Walla Valley Bands to celebrate **Pioneer Park Bandstand's 100th birthday** with a public concert. Walla Wallans young and old brought their folding chairs and blankets to listen to century-old music. During the performance Kirkman House board members sold home made ice cream grabbers as a fundraiser and they turned out to be very popular with the audience... and us.



Our **kitchen garden** ended up providing a huge harvest from a relatively small plot behind the house.



### Annual Whispered Memories tea returns

On Saturday, November 7th, regional psychic Janice Lynch will return to the museum for our annual Whispered Memories Psychic Tea. This popular event explores the 19th century obsession with paranormal phenomena. Ms. Lynch demonstrates psychometric readings using objects brought by audience members. Two two hour sessions will be held: the first starting at 10 am and the second at 1 pm. Tickets are \$25.00 with a \$5.00 discount to museum members. Advance reservations are required.

## 2009 Calendar of Events

October 3

### Sheep to Shawl

11am to 3pm

9th annual fall festival on the Kirkman House lawn.

October 20th thru 30th

### Haunted House

6 pm to 9 pm nightly

The Kirkman House and ArtWalla team up to sponsor the 2nd annual Haunted House located above Valley Vision in downtown Walla Walla.

November 7th

### Whispered Memories Psychic Tea

10 am and 1 pm

Two session of this popular event recreating an interesting Victorian pastime will be offered this year.

November 1st

### Final Spin-In of the year

1 pm and 4 pm

December 5th

### Victorian Christmas Jubilee

2:30 pm to 5:30 pm

The museum kicks off the Christmas season and warms you up for the Macy's Parade of Lights at 6 p.m.

## Coming in 2010

January 15th thru April 8th

**Catherine Blaine Paine:** *Seneca Falls & the women's rights movement in the state of Washington*

April 25, 2010

### Sweet Home Walla Walla

2nd annual showcase of historic Walla Walla homes.

**Check out these other heritage events in our region.....**

September 26-27, 2009

Fort Walla Walla Museum Harvest Festival

October 11, 2009

Dayton Historic Depot Historic Homes Tour

October 23-24, 2009

Tombstone Tales  
CREHST Richland

Historic Architecture Development, Inc.  
DBA Kirkman House Museum  
214 N. Colville  
Walla Walla, WA 99362

Non-Profit  
US Postage

**PAID**  
WALLA WALLA WA 99324  
PERMIT NO. 44

### Get on the Kirkman House e-news list!

Subscribe to our monthly newsletter, and keep updated with museum activities.

Go to [www.kirkmanhousemuseum.org](http://www.kirkmanhousemuseum.org) and enter your email in the "Join our E-mailing List" box in the upper right-hand corner.

**The Kirkman House Museum is committed to preserving our past and providing a setting for understanding our local history. There are many ways you can help; your support is what makes great things happen at the Kirkman House!**

#### Become a Museum Member

Members' benefits include a subscription to the museum's newsletter, discounts on program on class fees, and invitations to "Members Only" events. Your membership dues help pay for special exhibits and programs at the museum that enhance the cultural spirit of our community.

#### Join the Bricks and Mortar Society

These generous members commit to donating \$200 a year for three years to ensure the preservation work at the museum continues.

#### Include the Kirkman House Museum in your planned giving

From its origin as a museum 1978, the Kirkman House has preserved an important piece of Walla Walla's architectural and cultural heritage. Today, the museum continues to provide education about daily family life in Victorian-era Walla Walla. A gift to the Kirkman House Museum's endowment fund is an investment in the cultural heritage of our valley for future generations.

#### Support the annual fund

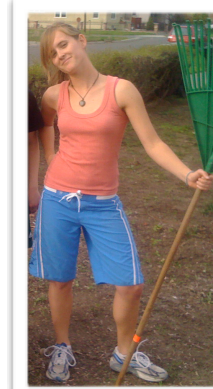
Contributions to the museum's annual fund provide important support for the care and maintenance of the museum, the conservation of our collections and our ability to continue providing dynamic programming.

#### Donate in-kind items or services

Contributions of material goods or professional services help reduce the operating costs of the museum.

#### Volunteer

Whether leading tours, assisting with collection management and exhibits, or helping at our special events our volunteers are invaluable to the museum's successful operations.



### Kirkman House Mission

*The Kirkman House Museum enriches the Walla Walla community with exhibits, events and programs that bring our valley's history to life.*

#### Membership Benefits

- ☐ Kirkman House Museum Newsletter
- ☐ Advance notice for Kirkman House programs
- ☐ Invitation to "Members Only" events
- ☐ Recognition in the Kirkman House News
- ☐ Tax deduction on dues
- ☐ Knowledge that you are helping to save the Kirkman House for future generations

#### 2009 KIRKMAN HOUSE MUSEUM MEMBERSHIP RENEWAL

Name: \_\_\_\_\_

Address: \_\_\_\_\_

City, State ZIP: \_\_\_\_\_

E-mail: \_\_\_\_\_

- ☐ Please contact me about volunteer opportunities.
- ☐ I would prefer not to have my name listed in museum publications.

#### ANNUAL MEMBERSHIP CATEGORIES

- ☐ Students/ Seniors (\$15)      ☐ Individual (\$25)      ☐ Family (\$50)
- ☐ Friend (\$250)      ☐ Donor (\$500)      ☐ Patron (\$1,000+)
- ☐ Bricks & Mortar Society (\$200 commitment per year for three years)

In addition to my membership, I am enclosing a gift of \$\_\_\_\_\_ to help:

Credit Card #: \_\_\_\_\_

☐ Visa, ☐ MC, Exp. Date: \_\_\_\_\_ Total amount enclosed: \$\_\_\_\_\_

Please return this form with your check payable to: **Kirkman House Museum**

Mail to: Kirkman House Museum 214 N. Colville Walla Walla, WA 99362